

HOLOSUN

2024 PROFESSIONAL CATALOG



Holosun

ABOUT US

Since early 2022, Holosun has made a product line tested to higher standards to ensure reliability under the rigors of professional use. These models have been assigned a different UPC than our commercial products and are identified with "LEM" added to the suffix of the model number (ex. HE509T-RD X2 LEM). LEM products undergo a more stringent/rigorous testing and QC protocol than our standard commercial products. Furthermore, each individual unit is fully tested under these parameters and must meet or exceed the minimum requirements to qualify as a "LEM" product. The LEM line is only available through a Holosun Authorized LE Dealer. Up-to date information regarding Authorized

LE Dealers can be verified through our Authorized LE Dealer locator, through your local Holosun LE Rep or by contacting Holosun. LEM products are made to order and will have a lead time on average of 90 days or better once the order has been received. As these products are made for professional use, they are covered under our professional use warranty. Any issues covered under the professional use warranty are processed under an Advanced Replacement protocol to ensure the customer has minimal downtime if an issue arises. Standard commercial products are not covered under warranty for professional use. The full details of both warranties can be found at www.holosun.com.





CONTENTS

8	DIGITAL REFLEX SIGHTS
20	SOLAR CHARGING SIGHTS
34	ENCLOSED PISTOL SIGHTS
44	OPEN PISTOL SIGHTS
54	RIFLE SIGHTS
66	WEAPONLIGHTS
80	MAGNIFIERS
88	LASERS
96	PRODUCT SPEC SHEETS



DIGITAL REFLEX SIGHTS



DIGITAL REFLEX SIGHTS

SOLAR CHARGING SIGHTS

ENCLOSED PISTOL SIGHTS

OPEN PISTOL SIGHTS

RIFLE SIGHTS

WEAPONLIGHTS

MAGNIFIERS

LASERS







DPS THERMAL



PRODUCT OVERVIEW

The DPS-TH (Digital Pistol Sight) is a red dot and thermal fusion sight that combines Holosun's red dot sight technology with thermal imaging capability. DPS-TH features an LED MRS (Multi-Reticle System) with an option to use a digital reticle. Thermal overlay is projected from a 640x480 resolution display at 50fps. The DPS-TH sensor is powered by an 18350 battery that is removable and rechargeable. DPS-TH also includes a magnetic USB charging cable.

// TECHNOLOGY & FEATURES

- Red Dot Sight w/ Fusion Thermal Overlay
- 50FPS Overlay Refresh Rate
- Modes: White Hot, Highlight, Outline
- Multiple Reticle System™ (MRS): 32 MOA Circle & 2 MOA Dot; 2 MOA Dot; 32 MOA Circle

// SPECIFICATIONS

- IP67 Certified Waterproof
- Battery: Camera: 1x 18350 / Red Dot: LiPo
- Sensor Resolution: 256x192
- Reticle Brightness: 8 Daylight & 4 Night Vision Compatible Settings
- Battery Life: TBD
- Window Size: 1.1 × 0.87 in

// SKU

DPS-TH-LEM





DPS NIGHT VISION



PRODUCT OVERVIEW

The DPS-NV (Digital Pistol Sight) is a red dot and night vision fusion sight that combines Holosun's red dot sight technology with digital night vision capability. DPS-NV features an LED MRS (Multi-Reticle System) with an option to use a digital reticle. A night vision overlay is projected from a TBD resolution display at 30/60fps. The night vision camera is powered by an 18350 battery that is removable and rechargeable. DPS also includes a magnetic USB charging cable.

// TECHNOLOGY & FEATURES

- Red Dot Sight w/ Fusion Night Vision Overlay
- 60FPS Overlay Refresh Rate
- Multiple Reticle System™ (MRS): 32 MOA Circle & 2 MOA Dot; 2 MOA Dot; 32 MOA Circle

// SPECIFICATIONS

- IP67 Certified Waterproof
- Battery: Camera: 1x 18350 / Red Dot: LiPo
- OLED / Sensor Resolution: 640 × 480 px
- Reticle Brightness: 8 Daylight & 4 Night Vision Compatible Settings
- Battery Life: TBD
- Window Size: 1.1 × 0.87 in

// SKU

DPS-NV-LEM





DRS-THERMAL



// TECHNOLOGY & FEATURES

- Red Dot Sight w/ Fusion Thermal Overlay
- 50FPS Overlay Refresh Rate
- Digital Zoom: 1x, 3x, 5x
- Modes: White Hot, Highlight, Outline
- Multiple Reticle System™ (MRS): 65 MOA Circle & 2 MOA Dot; 2 MOA Dot; 65 MOA Circle
- Cross or T Style Thermal Vision Reticles

// SPECIFICATIONS

- IP67 Certified Waterproof
- 2x 18350 Battery
- Sensor Resolution: 256×192
- Reticle Brightness: 8 Daylight & 4 Night Vision Compatible Settings
- Battery Life: Observation Mode: 10 Hours
Full Function Mode: 8 Hours
- Window Size: 1.25 × 0.98 in

PRODUCT OVERVIEW

The Holosun DRS-TH (Digital Reflex Sight-Thermal) redefines the boundaries of sight by integrating Holosun's renowned red dot sight technology with cutting-edge thermal imaging capabilities. This fusion sight offers a 1024x768 resolution display at an impressive 50fps, allowing users to perceive the unseen with unparalleled clarity. Its innovative design features multiple thermal image modes, including White Hot, Black Hot, Highlight, Outline, and Fusion, ensuring optimal visibility in diverse environments. The DRS-TH is not just a red dot sight; it's a transformative tool that empowers users to navigate the unseen with precision and confidence.

// SKU

DRS-TH-LEM





DRS-NIGHT VISION



PRODUCT OVERVIEW

The Holosun DRS-NV (Digital Reflex Sight-Night Vision) sets a new standard for versatility, merging Holosun's cutting-edge red dot sight technology with digital night vision capabilities. A 1024x768 resolution digital night vision sensor offers up to 60fps, giving users unparalleled clarity in low-light areas. The DRS-NV features a Multi-Reticle System (MRS) with multiple reticle options. The internal video recording system, along with on-board storage and USB-C connectivity, empowers users to capture critical moments.

// TECHNOLOGY & FEATURES

- Red Dot Sight w/ Fusion Night Vision Overlay
- 60FPS Overlay Refresh Rate
- Digital Zoom: 1x, 2x, 4x, 8x
- Internal Video Recording System
- Multiple Reticle System™ (MRS): 65 MOA Circle & 2 MOA Dot; 2 MOA Dot; 65 MOA Circle
- Cross or T Style Night Vision Reticles

// SPECIFICATIONS

- IP67 Certified Waterproof
- 2x 18350 Battery
- OLED / Sensor Resolution: 1024 × 768 px
- Reticle Brightness: 8 Daylight & 4 Night Vision Compatible Settings
- Battery Life: Observation Mode: 8 Hours
Full Function Mode: 6 Hours
- Window Size: 1.25 × 0.98 in

// SKU

DRS-NV-LEM





SOLAR CHARGING SIGHTS

DIGITAL REFLEX SIGHTS

 **SOLAR CHARGING SIGHTS**

ENCLOSED PISTOL SIGHTS

OPEN PISTOL SIGHTS

RIFLE SIGHTS

WEAPONLIGHTS

MAGNIFIERS

LASERS







SCS-CARRY



PRODUCT OVERVIEW

The SCS-CARRY (Solar Charging Sight) is a direct attachment optic for slim, carry-sized sub-compact handguns. It is designed to attach directly to HOLOSUN-K slide cuts, or to RMSc cut slides with the included adapter plate. The SCS-CARRY uses our innovative solar charging system with multi-directional light sensors to automatically adjust brightness in dynamic lighting situations. The SCS can potentially operate indefinitely with its internal, rechargeable 20,000-hour battery.

// TECHNOLOGY & FEATURES

- 20,000-Hour Power Reserve
- Aspheric Glass Lens w/ Zero Distortion
- Solar Charging Internal Battery
- Multi-Sensor Auto Brightness
- Brightness Intensity Override System
- Multiple Reticle System™ (MRS): 32 MOA Circle & 2 MOA Dot; 2 MOA Dot; 32 MOA Circle
- Includes RMSc-to-K Adapter Plate

// SPECIFICATIONS

- IPX8 Certified Waterproof
- Nitrogen Purged Enclosed Housing
- Travel Range \pm 30 MOA
- 1.5 MOA Windage & Elevation Adjustment Per Click
- Window Size: 0.77 x 0.58 in
- 7075 T6 Aluminum Housing
- Direct Fit For Holosun K Footprint

// SKU

SCS-CARRY-GR-LEM





SCS-P10



PRODUCT OVERVIEW

The SCS-P10-GR (Solar Charging Sight) is designed for the CZ-P10 optics-ready handguns. It is designed to attach directly to the slide without an adapter plate and uses our innovative solar charging system with multi-directional light sensors to automatically adjust brightness in dynamic situations. The SCS can potentially operate indefinitely with its internal, rechargeable 20,000-hour battery. With moderate exposure to bright light the SCS models charge the battery with more power used to display the reticle so you will never need to change batteries again.

// TECHNOLOGY & FEATURES

- 20,000-Hour Power Reserve
- Solar Charging Internal Battery
- Multi-Sensor Auto Brightness
- Brightness Intensity Override System
- Multiple Reticle System™ (MRS): 32 MOA Circle & 2 MOA Dot; 2 MOA Dot; 32 MOA Circle
- Direct Fit For CZ P10 Optics Ready Handguns

// SPECIFICATIONS

- IP67 Certified Waterproof
- Travel Range \pm 30 MOA
- 1 MOA Windage & Elevation Adjustment Per Click
- Window Size: 0.77 \times 0.58 in
- 7075 T6 Aluminum Housing

// SKU

SCS-P10-LEM





SCRS



PRODUCT OVERVIEW

The SCRS (Solar Charging Rifle Sight) advances Holosun's SCS technology creating an all-new, ultra compact 20mm tube sight designed for rifle applications. SCRS features multi-directional light sensors and an advanced Auto Mode for automatic reticle intensity settings and Manual Mode for manual control of dot intensity. SCRS is made from 7075 aluminum and utilizes Holosun's 509T footprint for compatibility with third-party offset RDS mounts. SCRS is available with a 2MOA dot or MRS (Multi-Reticle System) in Red or Green models.

// TECHNOLOGY & FEATURES

- 20,000-Hour Power Reserve
- Multi-Sensor Auto Brightness
- Solar Charging Internal Battery
- Multiple Reticle System™ (MRS): 65 MOA Circle & 2 MOA Dot; 2 MOA Dot; 65 MOA Circle
- Parallax Free & Unlimited Eye Relief
- Fits Holosun 509T Footprint

// SPECIFICATIONS

- IP67 Certified Waterproof
- Travel Range \pm 50 MOA
- Reticle Brightness: 8 Daylight & 4 Night Vision Compatible Settings
- 1 MOA Windage & Elevation Adjustment Per Click
- Window Size: 22mm Diameter
- 7075 T6 Aluminum Housing
- 1.63" Mount Included

// SKU

SCRS-MRS-RD-LEM



SCRS-MRS-GR-LEM

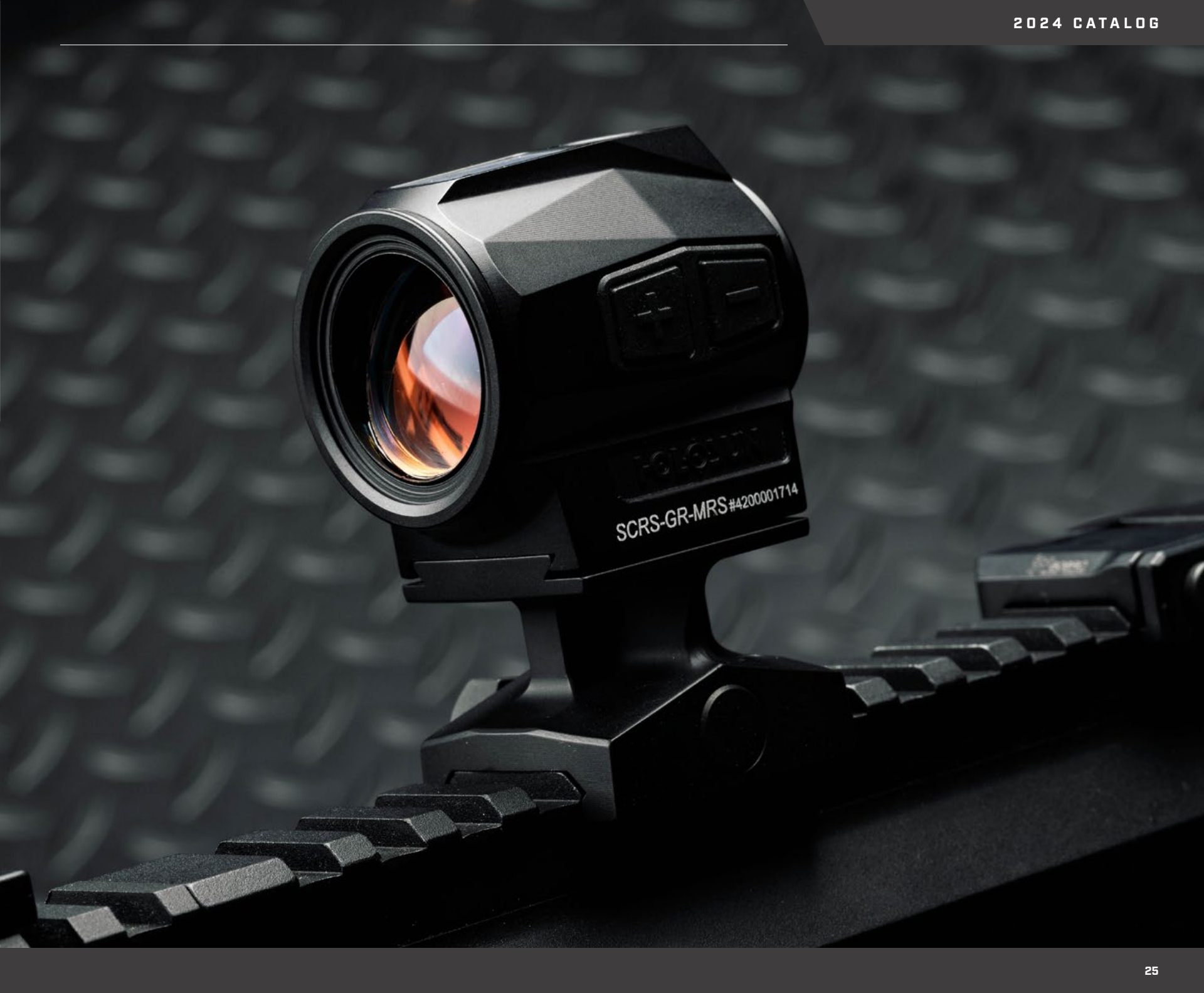


SCRS-RD-2-LEM



SCRS-GR-2-LEM





SCRS-GR-MRS #4200001714

SCS-320



PRODUCT OVERVIEW

The SCS-320-GR (Solar Charging Sight) is designed for P320 optics ready handguns and other DPP footprints. It is designed to attach directly to the slide without an adapter plate and uses our solar charging system with multi-directional light sensors to automatically adjust brightness. The SCS can potentially operate indefinitely using an internal, rechargeable 20,000-hour battery meaning you will never need to change batteries again. Included is an intensity override function which locks the optic into a high brightness mode for 30 minutes.

// TECHNOLOGY & FEATURES

- 20,000-Hour Power Reserve
- Aspheric Glass Lens w/ Zero Distortion
- Solar Charging Internal Battery
- Multi-Sensor Auto Brightness
- Brightness Intensity Override System
- Multiple Reticle System™ (MRS): 32 MOA Circle & 2 MOA Dot; 2 MOA Dot; 32 MOA Circle
- Direct Fit For Sig Sauer Optics-Ready P320 Handguns & DPP Footprint Applications

// SPECIFICATIONS

- IPX8 Certified Waterproof
- Nitrogen Purged Enclosed Housing
- Travel Range \pm 30 MOA
- 1.5 MOA Windage & Elevation Adjustment Per Click
- Window Size: 0.90 \times 0.63 in
- 7075 T6 Aluminum Housing

// SKU

SCS-320-GR-LEM





SCS-MOS

SCS-MP2



* // TECHNOLOGY & FEATURES

- 20,000-Hour Power Reserve
- Solar Charging Internal Battery
- Multi-Sensor Auto Brightness
- Brightness Intensity Override System
- Multiple Reticle System™ (MRS): 32 MOA Circle & 2 MOA Dot; 2 MOA Dot; 32 MOA Circle

*Direct Fit For Full-Size GLOCK™ MOS Handguns

**Direct Fit For Smith & Wesson M&P-M2.0™ Optics-Ready 9mm & 40S&W Handguns

** // SPECIFICATIONS

- IP67 Certified Waterproof
- Travel Range \pm 30 MOA
- 1 MOA Windage & Elevation Adjustment Per Click
- Window Size: 0.77 \times 0.58 in
- Housing: SCS-MOS - Grade 5 Titanium
SCS-MP2: 7075 T6 Aluminum

// SKU

SCS-M-GR-LEM



SCS-MP2-GR-LEM



SCS-PDP

SCS-VP9



// SKU

SCS-PDP-LEM



SCS-VP9-GR-LEM



// SPECIFICATIONS

- IP67 Certified Waterproof
- Travel Range ± 30 MOA
- 1 MOA Windage & Elevation Adjustment Per Click
- Window Size: 0.77 \times 0.58 in
- 7075 T6 Aluminum Housing

**

// TECHNOLOGY & FEATURES

- 20,000-Hour Power Reserve
- Solar Charging Internal Battery
- Multi-Sensor Auto Brightness
- Brightness Intensity Override System
- Multiple Reticle System™ (MRS): 32 MOA Circle & 2 MOA Dot; 2 MOA Dot; 32 MOA Circle

* Direct Fit For Walther PDP 2.0 Optics-Ready Handguns

**Direct Fit For HK© VP9™ Optics-Ready Handguns

ENCLOSED PISTOL SIGHTS



DIGITAL REFLEX SIGHTS

SOLAR CHARGING SIGHTS

 **ENCLOSED PISTOL SIGHTS**

OPEN PISTOL SIGHTS

RIFLE SIGHTS

WEAPONLIGHTS

MAGNIFIERS

LASERS





HOLOSUN

SIG
CUSTOM WORKS

EPS



PRODUCT OVERVIEW

The EPS is a full-sized, enclosed handgun sight featuring an aspheric lens for a perfectly clear sight picture. EPS has an ultra-low dot height for compatibility with most factory iron sights and utilizes Holosun's K footprint. EPS units include an RMR-to-K footprint adapter plate for maximum compatibility. EPS is available with a green or red LED in 2MOA, 6MOA, or MRS (Multi-Reticle System). All EPS models feature Shake Awake technology and MRS models include Solar Failsafe.

// TECHNOLOGY & FEATURES

- Up to 50,000 Hour Battery Life
- Aspherical Glass Lens with Zero Distortion
- Shake Awake™ Technology with Last Setting Recall
- Solar Failsafe™ (MRS Models Only)
- Multiple Reticle System™ (MRS): 32 MOA Circle & 2 MOA Dot; 2 MOA Dot; 32 MOA Circle
- 2 MOA / 6 MOA Reticles
- Includes RMR-to-K Adapter Plate

// SPECIFICATIONS

- IPX8 Certified Waterproof
- Travel Range \pm 30 MOA
- Reticle Brightness: 8 Daylight & 4 Night Vision Compatible Settings
- 1.5 MOA Windage & Elevation Adjustment Per Click
- Window Size: 0.90 x 0.63 in
- 7075 T6 Aluminum Housing

// SKU

EPS-RD-MRS-LEM



EPS-GR-MRS-LEM



EPS-RD-2-LEM



EPS-GR-2-LEM

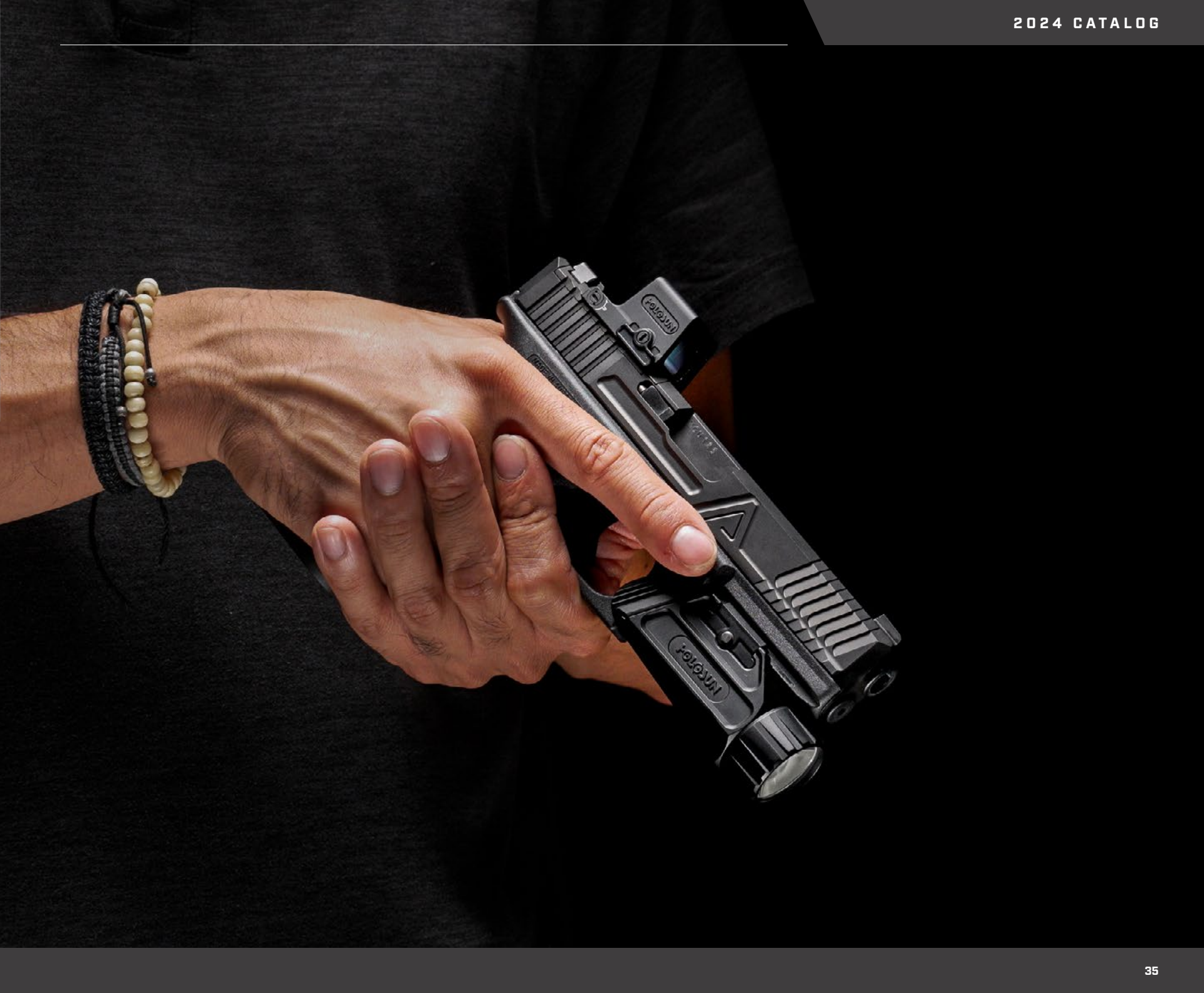


EPS-RD-6-LEM



EPS-GR-6-LEM





EPS CARRY



PRODUCT OVERVIEW

The EPS Carry is an enclosed handgun sight designed for single or 1.5 stack handguns. EPS Carry features an aspheric lens for a perfectly clear sight picture and has an ultra-low dot height for compatibility with most factory iron sights. EPS Carry includes a built-in rear notch sight, utilizes Holosun's K footprint, and includes an RMSc-to-K footprint adapter plate for maximum compatibility. EPS Carry is available with a green or red LED in 2MOA, 6MOA, or MRS (Multi-Reticule System). All EPS models feature Shake Awake technology and MRS models include Solar Failsafe.

// TECHNOLOGY & FEATURES

- Up to 50,000 Hour Battery Life
- Aspherical Glass Lens with Zero Distortion
- Shake Awake™ Technology with Last Setting Recall
- Solar Failsafe™ (MRS Models Only)
- Multiple Reticule System™ (MRS): 32 MOA Circle & 2 MOA Dot; 2 MOA Dot; 32 MOA Circle
- 2 MOA / 6 MOA Reticles
- Includes RMSc-to-K Adapter Plate

// SPECIFICATIONS

- IPX8 Certified Waterproof
- Travel Range \pm 30 MOA
- Reticule Brightness: 8 Daylight & 4 Night Vision Compatible Settings
- 1.5 MOA Windage & Elevation Adjustment Per Click
- Window Size: 0.77 x 0.58 in
- 7075 T6 Aluminum Housing

// SKU

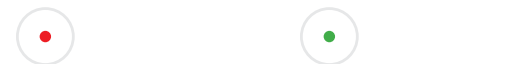
EPS-CARRY-RD-MRS-LEM EPS-CARRY-GR-MRS-LEM



EPS-CARRY-RD-2-LEM EPS-CARRY-GR-2-LEM



EPS-CARRY-RD-6-LEM EPS-CARRY-GR-6-LEM





HE509T X2



PRODUCT OVERVIEW

The HE509T series are hard-use, enclosed LED sights designed for handgun applications. The HE509T series feature a grade 5 titanium housing, Holosun's Super LED with up to 50k hour battery life, Solar Failsafe, and Shake Awake technology. The X2 version adds improved glass clarity, Lock Mode, and our Multi-Reticle System provide a 2MOA dot only, 32MOA Circle only, or a Circle and Dot. HE509T includes an adapter plate compatibility with RMR-style footprints.

// TECHNOLOGY & FEATURES

- Up to 50,000 Hour Battery Life
- Nitrogen Purged Housing
- Shake Awake™ Technology with Last Setting Recall
- Solar Failsafe™
- Multiple Reticle System™ (MRS): 32 MOA Circle & 2 MOA Dot; 2 MOA Dot; 32 MOA Circle
- Includes RMR-to-509T Adapter Plate

// SPECIFICATIONS

- IP67 Certified Waterproof
- Travel Range ± 30 MOA
- Reticle Brightness: 10 Daylight & 2 Night Vision Compatible Settings
- 1 MOA Windage & Elevation Adjustment Per Click
- Window Size: 0.66 × 0.90 in
- Grade 5 Titanium Housing

// SKU

HE509T-RD X2-LEM



HE509T-GR X2-LEM





OPEN PISTOL SIGHTS





DIGITAL REFLEX SIGHTS

SOLAR CHARGING SIGHTS

ENCLOSED PISTOL SIGHTS



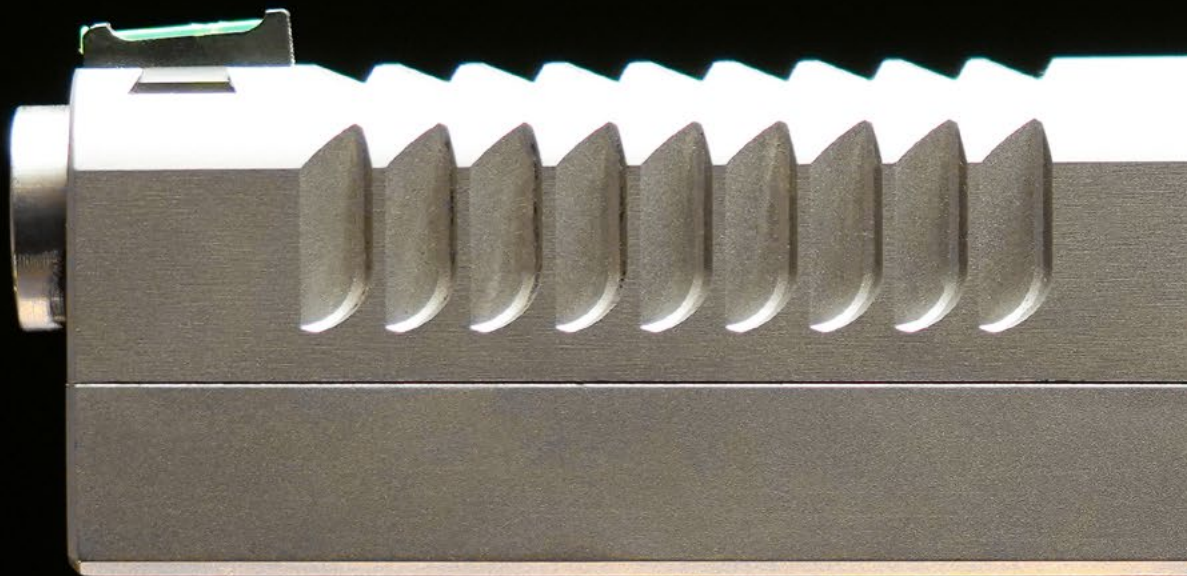
OPEN PISTOL SIGHTS

RIFLE SIGHTS

WEAPONLIGHTS

MAGNIFIERS

LASERS





HOLOSUN

HS507COMP
#4191001799

SAW

507COMP



PRODUCT OVERVIEW

The 507Comp handgun sight features a large 1.1" x 0.87" objective lens for enhanced shooting performance and Holosun's new Competition Reticle System (CRS) available with a red or green LED. CRS is an enhanced Multi-Reticle System with four components including a precision 2MOA dot, an 8MOA circle, 20MOA circle, and 32MOA circle with multiple combination settings to suit individual shooter's preference.

// TECHNOLOGY & FEATURES

- Up to 50,000 Hour Battery Life
- Shake Awake™ Technology with Last Setting Recall
- Enlarged Window for Enhanced Field Of View
- Competition Reticle System (CRS): 2 MOA Dot with 8/20/32 MOA Circle
- Parallax Free & Unlimited Eye Relief

// SPECIFICATIONS

- Travel Range ± 30 MOA
- Reticle Brightness: 6 Daylight & 2 Night Vision Compatible Settings
- 1 MOA Windage & Elevation Adjustment Per Click
- Window Size: 1.1 x 0.87 in
- 7075 T6 Aluminum Housing

// SKU

507COMP-LEM



507COMP-GR-LEM





HE508T X2



PRODUCT OVERVIEW

The HE508T X2 series are open reflex sights designed for handgun applications. Features include a grade 5 titanium housing with industry standard footprint, Holosun's Super LED with up to 50k hour battery life, Multi-Reticle System providing 2MOA dot only, 32MOA Circle only, or Circle-Dot. HE508T X2 also features Solar Failsafe, Shake Awake, and Lock Mode which, when activated, can prevent inadvertent setting changes.

// TECHNOLOGY & FEATURES

- Up to 50,000 Hour Battery Life
- Shake Awake™ Technology with Last Setting Recall
- Solar Failsafe™
- Multiple Reticle System™ (MRS): 32 MOA Circle & 2 MOA Dot; 2 MOA Dot; 32 MOA Circle
- Parallax Free & Unlimited Eye Relief

// SPECIFICATIONS

- Travel Range ± 50 MOA
- Reticle Brightness: 10 Daylight & 2 Night Vision Compatible Settings
- 1 MOA Windage & Elevation Adjustment Per Click
- Window Size: 0.63 × 0.91 in
- Grade 5 Titanium Housing

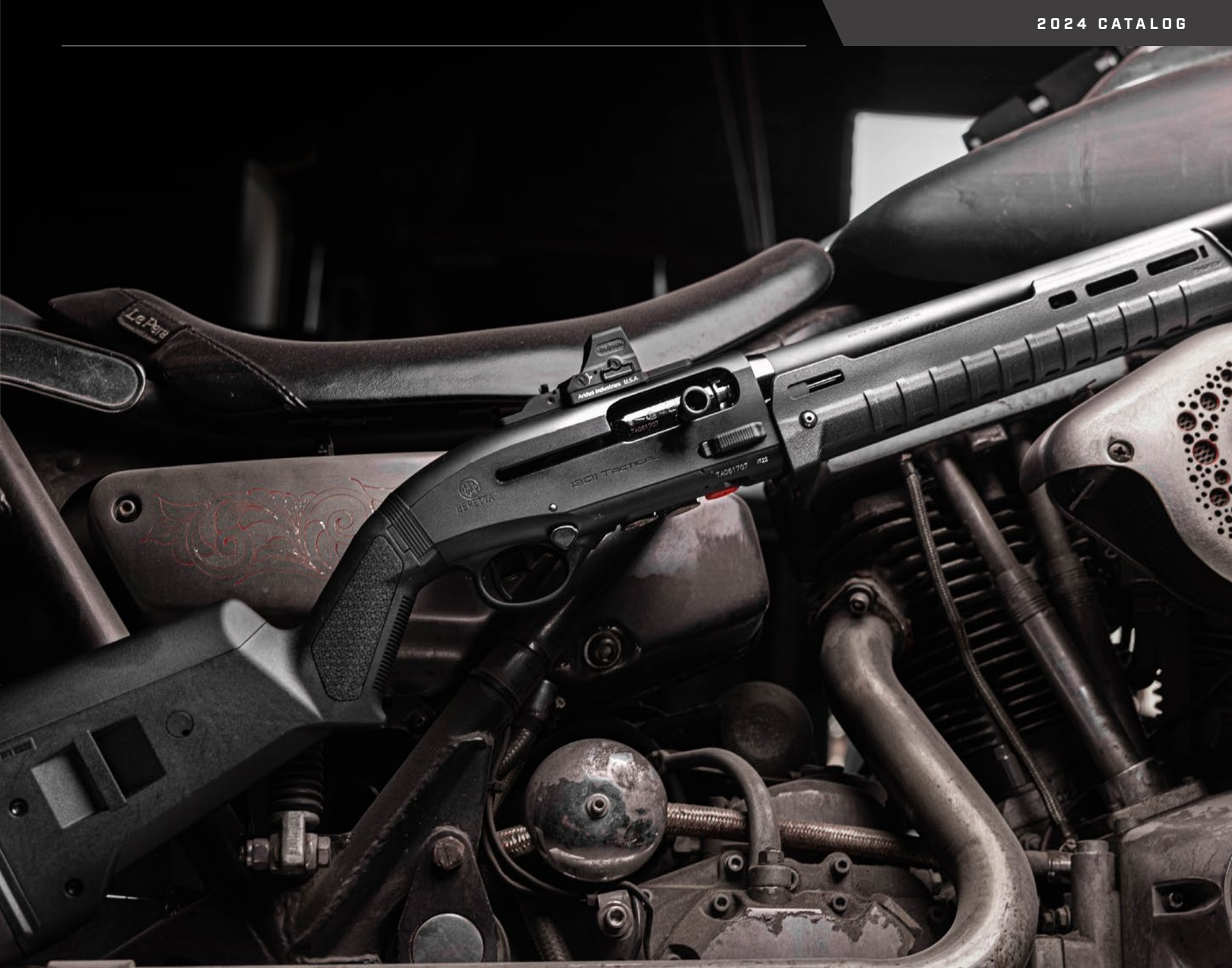
// SKU

HE508T-RD X2-LEM



HE508T-GR X2-LEM





507C X2

407C X2



// TECHNOLOGY & FEATURES

- Up to a 50,000 Hour Battery life
- Shake Awake Technology™ with Last Setting Recall
- Solar FailSafe™
- Multiple Reticle System™ (MRS): 32 MOA Circle & 2 MOA Dot; 2 MOA Dot; 32 MOA Circle (HE/HS507C)
- 2 MOA Reticle (HE/HS407C)
- Parallax Free & Unlimited Eye Relief

// SPECIFICATIONS

- Travel Range \pm 50 MOA
- Reticle Brightness: 10 Daylight & 2 Night Vision Compatible Settings
- 1 MOA Windage & Elevation Adjustment Per Click
- Window Size: 0.63 x 0.91 in
- 7075 T6 Aluminum Housing

// SKU

HS507C X2-LEM



HE507C-GR X2-LEM



HS407C X2-LEM



HE407C-GR X2-LEM



507K X2

407K X2



// SKU

HS507K X2-LEM



HE507K-GR X2-LEM



HS407K X2-LEM



HE407K-GR X2-LEM



// SPECIFICATIONS

- Travel Range \pm 30 MOA
- Reticle Brightness: 10 Daylight & 2 Night Vision Compatible Settings
- 1 MOA Windage & Elevation Adjustment Per Click
- Window Size: 0.58 \times 0.77 in
- 7075 T6 Aluminum Housing

// TECHNOLOGY & FEATURES

- Up to a 50,000 Hour Battery life
- Shake Awake Technology™ with Last Setting Recall
- Multiple Reticle System™ (MRS): 32 MOA Circle & 2 MOA Dot; 2 MOA Dot; 32 MOA Circle (HE/HS507K)
- 6 MOA Reticle (HE/HS407K)
- Parallax Free & Unlimited Eye Relief

RIFLE SIGHTS

DIGITAL REFLEX SIGHTS

SOLAR CHARGING SIGHTS

ENCLOSED PISTOL SIGHTS

OPEN PISTOL SIGHTS

 **RIFLE SIGHTS**

WEAPONLIGHTS

MAGNIFIERS

LASERS





AEMS



PRODUCT OVERVIEW

The Holosun Advanced Enclosed Micro Sight™ (AEMS) is 11% smaller than our traditional 20mm tube style optics, while still offering more than double the field of view. The AEMS offers the best combination of weight vs size vs field of view of any Holosun model.

// TECHNOLOGY & FEATURES

- Up to a 50,000 Hour Battery Life
- Shake Awake Technology™ with Last Setting Recall
- Solar FailSafe™ (AEMS Model Only)
- Flip Down Protective Lens Covers (AEMS Model Only)
- Multiple Reticle System™ (MRS): 65 MOA Circle & 2 MOA Dot; 65 MOA Circle; 2 MOA Dot
- 2 MOA Dot Reticle Only (AEMS Core)

// SPECIFICATIONS

- AEMS: IPX8 Certified Waterproof / AEMS Core: IP67 Certified Waterproof
- Travel Range \pm 50 MOA
- Reticle Brightness: AEMS: 8 Daylight & 4 Night Vision Compatible Settings // AEMS Core: 10 Daylight & 4 Night Vision Compatible Settings
- ½ MOA Windage & Elevation Adjustment Per Click
- Window Size: 1.1 x 0.87 in
- AEMS: 7075 T6 Aluminum Housing / AEMS Core: Durable Aluminum Housing

// SKU

AEMS RED-LEM



AEMS GREEN-LEM



AEMS CORE RED-LEM



AEMS CORE GREEN-LEM





HS510C

HE510C



// TECHNOLOGY & FEATURES

- Up to a 50,000 Hour Battery life
- Shake Awake Technology™ with Last Setting Recall
- Solar FailSafe™
- Multiple Reticle System™ (MRS): 65 MOA Circle & 2 MOA Dot; 65 MOA Circle; 2 MOA Dot
- Parallax Free & Unlimited Eye Relief

*Available in FDE & 510C + HM3X Combo

// SPECIFICATIONS

- IP67 Certified Waterproof
- Travel Range \pm 50 MOA
- Reticle Brightness: 10 Daylight & 2 Night Vision Compatible Settings
- ½ MOA Windage & Elevation Adjustment Per Click
- Window Size: 0.91 × 1.26 in
- Aluminum Body with Titanium Hood

// SKU

HS510C-LEM



HE510C-GR-LEM



HE530C

HE530G



// SKU

HE530G/C-RD-LEM



HE530G/C-GR-LEM



// SPECIFICATIONS

- IPX8 Certified Waterproof
- Travel Range \pm 50 MOA
- Reticle Brightness: 10 Daylight & 2 Night Vision Compatible Settings
- $\frac{1}{2}$ MOA Windage & Elevation Adjustment Per Click
- Window Size: 30mm Diameter
- Grade 5 Titanium Housing

// TECHNOLOGY & FEATURES

- Up to a 50,000 Hour Battery life
- Shake Awake Technology™ with Last Setting Recall
- Solar FailSafe™ (HE530C Only)
- Multiple Reticle System™ (MRS): 65 MOA Circle & 2 MOA Dot; 2 MOA Dot
- Parallax Free & Unlimited Eye Relief

HE515CM HE515GM



// TECHNOLOGY & FEATURES

- Up to a 50,000 Hour Battery life
- Shake Awake Technology™ with Last Setting Recall
- Solar FailSafe™ (HE515CM / HS515CM Only)
- Multiple Reticle System™ (MRS): 65 MOA Circle & 2 MOA Dot; 2 MOA Dot
- Parallax Free & Unlimited Eye Relief

// SPECIFICATIONS

- IPX8 Certified Waterproof
- Travel Range \pm 50 MOA
- Reticle Brightness: 10 Daylight & 2 Night Vision Compatible Settings
- $\frac{1}{2}$ MOA Windage & Elevation Adjustment Per Click
- Window Size: 20mm Diameter
- 7075 T6 Aluminum Housing

// SKU

HS515GM/CM-RD-LEM

HE515GM/CM-GR-LEM



HE515GT HE515CT



// SKU

HE515GT/CT-RD-LEM



HE515GT/CT-GR-LEM



// SPECIFICATIONS

- IPX8 Certified Waterproof
- Travel Range \pm 50 MOA
- Reticle Brightness: 10 Daylight & 2 Night Vision Compatible Settings
- $\frac{1}{2}$ MOA Windage & Elevation Adjustment Per Click
- Window Size: 20mm Diameter
- Grade 5 Titanium Housing

// TECHNOLOGY & FEATURES

- Up to a 50,000 Hour Battery life
- Shake Awake Technology™ with Last Setting Recall
- Solar FailSafe™ (HE515CT Only)
- Multiple Reticle System™ (MRS): 65 MOA Circle & 2 MOA Dot; 2 MOA Dot
- Parallax Free & Unlimited Eye Relief

WEAPON LIGHTS

DIGITAL REFLEX SIGHTS

SOLAR CHARGING SIGHTS

ENCLOSED PISTOL SIGHTS

OPEN PISTOL SIGHTS

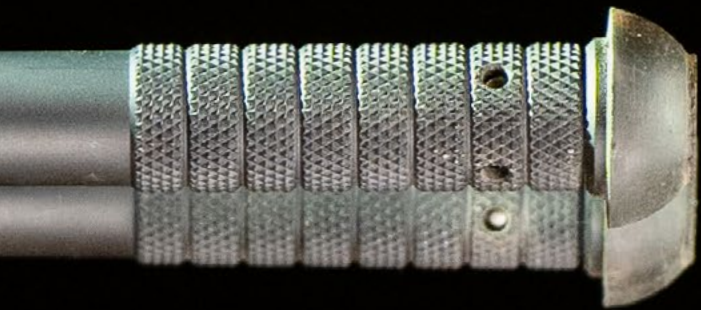
RIFLE SIGHTS

 **WEAPONLIGHTS**

MAGNIFIERS

LASERS





RAID



PRODUCT OVERVIEW

The RAID (Rifle Area Illumination Device) is an all-new, high-power, long-gun white light that brings powerful illumination and user-interface versatility. RAID features 80,000 candela and 1000 lumens for identification of targets and greater distances. RAID is activated via the included, compact, remote switch or using the integrated tail cap button. Mounting on Picatinny rails or M-LOK is covered out of the box, and the single 18650 rechargeable power source is also included. RAID has an ultra-durable 7075 aluminum body, is IP68 dust and waterproof, and withstands 2000g of shock.

// TECHNOLOGY & FEATURES

- Lumens: 1,000
- Candela: High - 80,000
- Remote Activation Button Included
- Integrated Tailcap Button
- M-LOK & Picatinny Mount Included

// SPECIFICATIONS

- IPX8 Certified Waterproof
- Removable & Rechargeable 18650 Li-ion Battery
- Weight: TBD
- 7075 T6 Aluminum Housing
- Included USB Magnetic Charging Cable

// SKU

RAID-LEM



LED WHITE LIGHT



P.ID-K



PRODUCT OVERVIEW

The Holosun P.ID-K sets a new standard in compact weaponlights, offering aW combination of power and precision. Featuring a powerful flashlight with an impressive 1,000 lumens output and 10,000 candela, this weaponlight ensures optimal visibility in low-light conditions. The P.ID-K introduces redesigned activation switches, with enhanced traction ensuring swift and intuitive control. With its compact dimensions, this weaponlight is tailored to be a perfect fit for most compact handguns, delivering a powerful illumination solution without compromising maneuverability.

// TECHNOLOGY & FEATURES

- Lumens: 1,000
- Candela: 10,000
- Rail Adapters Keys Included
- Universal Mounting System
- 20% Shorter Overall Length Compared to P.ID

// SPECIFICATIONS

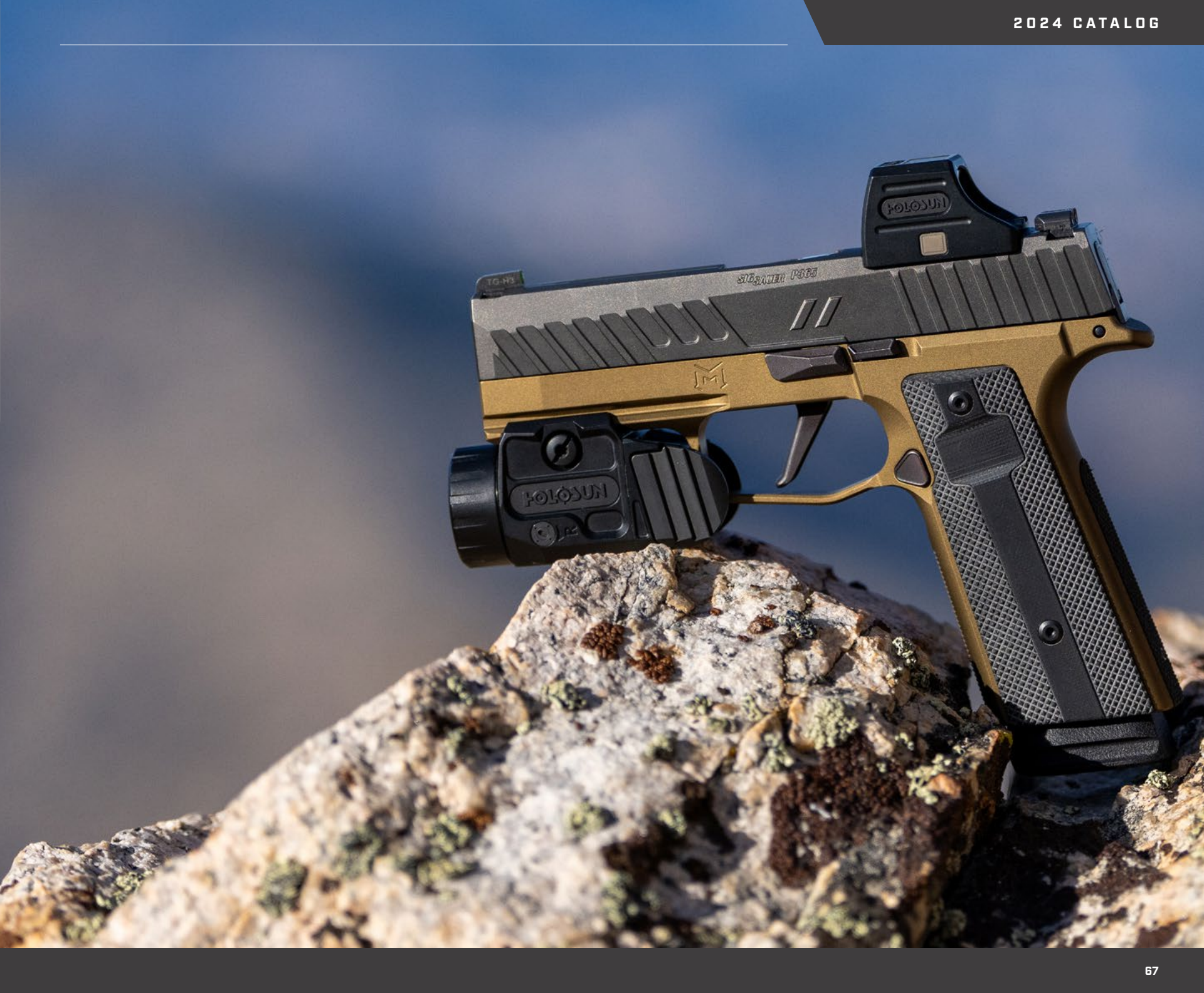
- IPX8 Certified Waterproof
- Internal Rechargeable Battery
- Weight: 3.4 oz
- 7075 T6 Aluminum Housing
- Included USB Magnetic Charging Cable

// SKU

P.ID-K-LEM



LED WHITE LIGHT



P.ID-K-PLUS



PRODUCT OVERVIEW

The Holosun P.ID-K- PLUS sets a new standard in compact weaponlights, offering a combination of power and precision. Featuring a powerful flashlight with an impressive 1,000 lumens output and 10,000 candela, this weaponlight ensures optimal visibility in low-light conditions. The P.ID-K introduces redesigned activation switches, enhanced for ergonomic efficiency, ensuring swift and intuitive control. With its compact dimensions, this weaponlight is a perfect fit for most compact handguns. Along with these advancements, the addition of a visible green laser further enhances target acquisition capabilities.

// TECHNOLOGY & FEATURES

- Lumens: 1,000
- Candela: 10,000
- Rail Adapters Keys Included
- Universal Mounting System
- 20% Shorter Overall Length Compared to P.ID
- Integrated Visible Green Laser

// SPECIFICATIONS

- IPX8 Certified Waterproof
- Internal Rechargeable Battery
- Weight: 3.6 oz
- 7075 T6 Aluminum Housing
- USB Magnetic Charging w/ Cable

// SKU

P.ID-K-PLUS-LEM



+



LED WHITE LIGHT



P.ID

P.ID-HC

PRODUCT OVERVIEW

Holosun's Positive Identification Device™ High Candela (P.ID-HC) offers illumination capability of up to 800 lumens with 42,000 candela and uses a rechargeable power source. The P.ID-HC is a powerful, yet compact lighting solutions that is compatible with most light-bearing duty holsters.



// TECHNOLOGY & FEATURES

P.ID

- Lumens: High - 1,000 / Low - 500
- Candela: High - 23,000
- Runtime: High - 30 Min

P.ID-HC

- Lumens: High - 800 / Low - 400
- Candela: High - 42,000
- Runtime: High - 30 Min

// SPECIFICATIONS

- IPX8 Certified Waterproof
 - Removable & Rechargeable 18350 Li-ion Battery
 - Weight: 5 oz
 - 7075 T6 Aluminum Housing
 - Fits Most x300 Duty Holsters
- USB Magnetic Charging w/ Cable

// SKU

P.ID-LEM



P.ID-HC-LEM





P.ID PLUS

P.ID DUAL



PRODUCT OVERVIEW

P.ID Dual is a high-power white light with visible green laser and an infrared laser. P.ID Dual includes Plus Mode, adds IR Mode (IR function only), and Dual Mode which enables the user to fire white light and VIS green laser, or IR laser using different activation buttons providing active aiming on multiple spectrums should the need arise.

// TECHNOLOGY & FEATURES

P.ID PLUS

- Lumens: High - 900 / Low - 450
- Candela: High - 20,000
- Runtime: High - 30 Min
- Integrated Green Laser

P.ID-DUAL

- Lumens: High - 800 / Low - 400
- Candela: High - 17,000
- Runtime: High - 30 Min
- Integrated Green Laser & IR Laser

// SPECIFICATIONS

- IPX8 Certified Waterproof
- Removable & Rechargeable 18350 Li-ion Battery
- Weight: 5.1 oz
- 7075 T6 Aluminum Housing
- USB Magnetic Charging w/ Cable

// SKU

P.ID-PLUS-LEM



P.ID-DUAL-LEM





MAGNIFIERS

DIGITAL REFLEX SIGHTS

SOLAR CHARGING SIGHTS

ENCLOSED PISTOL SIGHTS

OPEN PISTOL SIGHTS

RIFLE SIGHTS

WEAPONLIGHTS

 **MAGNIFIERS**

LASERS







R

FOLOSUN

FOLOSUN

AEMS #AA036359

PWS MK114 MOD

M

HM6X



PRODUCT OVERVIEW

The HM6X is a flip-to-side 6X magnifier designed for use in conjunction with a red dot sight. The HM6X is feature-packed and includes a quick release, ambidextrous, flip-to-side Picatinny rail mount. The 7075-aluminum housing features a removeable spacer which provides compatibility with both absolute and lower 1/3 co-witness dot heights for maximum compatibility. The HM6X has a generous 2.55" of eye relief, is IP67 certified water resistant, and includes windage and elevation adjustments for precision alignment with your red dot sight zero.

// TECHNOLOGY & FEATURES

- Flip-to-the-side Design
- Compatible with Absolute & Lower 1/3 Height Optics
- QD Mount & Spacer Included

// SPECIFICATIONS

- IP67 Certified Waterproof
- 6X Magnification
- 3.7° FOV
- Eye Relief: 65mm / 2.55 in
- Exit Pupil: 4.6mm / .18 in
- 7075 T6 Aluminum
- Weight: 11 oz

// SKU

HM6X-LEM



HM3X



// TECHNOLOGY & FEATURES

- Flip-to-the-side Design
- Compatible with Absolute & Lower 1/3 Height Optics
- QD Mount & Spacer Included

// SPECIFICATIONS

- IP67 Certified Waterproof
- 3X Magnification
- 7° FOV
- Eye Relief: 70mm / 2.75 in
- Exit Pupil: 7.6mm / 0.29 in
- Durable Aluminum Housing

// SKU

HM3X-LEM

HM3X-T



// SKU

HM3X-T-LEM

// SPECIFICATIONS

- IP67 Certified Waterproof
- 3X Magnification
- 7° FOV
- Eye Relief: 70mm / 2.75 in
- Exit Pupil: 7.6mm / 0.29 in
- Grade 5 Titanium Housing

// TECHNOLOGY & FEATURES

- Ultra Compact, Flip-to-the-side Design
- Compatible with Absolute & Lower 1/3 Height Optics
- QD Mount & Spacer Included



LASERS

A close-up, low-angle shot of a rifle's fire control group and handguard. The rifle is dark-colored, possibly black or dark grey, with yellow accents on the handguard. A rail-mounted device, likely a sight or laser, is attached to the handguard. The device has a textured grip and a lens. The background is a solid, dark blue color.

DIGITAL RIFLE SIGHTS

SOLAR CHARGING SIGHTS

ENCLOSED PISTOL SIGHTS

OPEN PISTOL SIGHTS

RIFLE SIGHTS

WEAPONLIGHTS

MAGNIFIERS

 **LASERS**



IRIS



PRODUCT OVERVIEW

The IRIS (Integrated Rifle Infrared System) is an ultra compact, class IIIr visible green aiming device with a coaxial mounted class 2m IR laser and IR illuminator for use with night vision devices. IRIS features an ergonomic slider to dial in the IR illuminator between flood and spot. A new electronic selector switch toggles between visible, IR pointer, IR illuminator, or IR pointer & illuminator with LED indicators for current mode. IRIS is powered by a CR123 battery and is activated either from the top-mounted fire button or using a compatible, industry standard remote switch.

// TECHNOLOGY & FEATURES

- IR Pointer and Illuminator with VCSEL Laser
- New Compact Housing Design
- Quick Adjustable Focus IR Illuminator
- Coaxial Laser Mechanism
- Intensity Selector Switch
- Mode Button w/ LED Indicator

// SPECIFICATIONS

- IPX8 Certified Waterproof
- Battery: CR123A
- Weight: 6.35 oz
- 7075 T6 Aluminum Housing
- Travel Range \pm 50 MOA
- 0.5 MOA Windage & Elevation Adjustment Per Click

// SKU

IRIS-LEM



IR ILLUMINATOR



LE117

LS117



// TECHNOLOGY & FEATURES

- Visible or IR Laser Designator
- High / Low Mode Selector (LE117 Only)
- Quick Detach Mount

// SPECIFICATIONS

- CR123A Battery
- IP67 Certified Waterproof (LS117 Only)
- IPX8 Certified Waterproof (LE117 Only)
- AA / CR2 Battery (LS117G Only)
- 7075 T6 Aluminum Housing (LS117 Only)
- Grade 5 Titanium Housing (LE117 Only)

// SKU

LS117-G-LEM	LS117-R-LEM	LS117-IR-LEM
LE117-GR-LEM	LE117-R-LEM	LE117-IR-LEM

LE221

LS221



// SKU

LS221R-LEM



OR

LS221G-LEM



LE221-GR&IR-LEM



OR

LE221-RD&IR-LEM



// SPECIFICATIONS

- CR123A Battery
- IP67 Certified Waterproof (LS221 Only)
- IPX8 Certified Waterproof (LE221 Only)
- 7075 T6 Aluminum Housing (LS221 Only)
- Grade 5 Titanium Housing (LE221 Only)

// TECHNOLOGY & FEATURES

- Visible or IR Laser Designator
- Coaxial Laser Mechanism
- Mode / Intensity Selector Switch
- Quick Detach Mount

LE321

LS321



// TECHNOLOGY & FEATURES

- Visible & IR Laser Designator
- Adjustable Focus IR Illuminator
- Optional White Light (LE321 Only)
- Coaxial Laser Mechanism
- Mode / Intensity Selector Switch
- Quick Detach Mount

// SPECIFICATIONS

- CR123A Battery
- IP67 Certified Waterproof (LS321 Only)
- IPX8 Certified Waterproof (LE321 Only)
- 7075 T6 Aluminum Housing (LS321 Only)
- Grade 5 Titanium Housing (LE321 Only)

// SKU

LS321G-LEM



OR

LS321R-LEM



IR ILLUMINATOR

LE321-GR-LEM



OR

LE321-RD-LEM



IR ILLUMINATOR

+



LED WHITE LIGHT



LE420

LS420



// TECHNOLOGY & FEATURES

- Visible & IR Laser Designator
- Visible & IR Illuminator
- Coaxial Laser Mechanism
- Mode / Intensity Selector Switch
- Quick Detach Mount

// SPECIFICATIONS

- Two CR123A Batteries
- Two CR123A / 18650 Rechargeable Battery (LE420 Only)
- IP67 Certified Waterproof (LS420 Only)
- IPX8 Certified Waterproof (LE420 Only)
- 7075 T6 Aluminum Housing (LS420 Only)
- Grade 5 Titanium Housing (LE420 Only)

// SKU

LE420-GR-LEM



IR ILLUMINATOR

+



LED WHITE LIGHT

LS420G-LEM



IR ILLUMINATOR

+



LED WHITE LIGHT



	DPS-TH-LEM	DPS-NV-LEM
FUNCTIONS		
Field Of View	13.5°×10°	TBD
MRTD	<50mK	TBD
Spectral Range	8-14um	TBD
Sensor Resolution	256×192	TBD
OLED Resolution	640×480	TBD
Frame Rate	50FPS	TBD
Image Modes	White Hot, Black Hot, Highlight, Edge Detection, Fusion	TBD
Battery Life	TBD	TBD
External Charging	5V/2A, Magnetic USB	5V/2A, Magnetic USB
ELECTRONIC DATA		
Red Dot Battery	TBD	TBD
Camera Battery	1x 18350	1x 18350
MECHANICAL DATA		
Housing Material	7075 T6 Aluminum	7075 T6 Aluminum
Surface Finish	Anodized	Anodized
Housing Color	Black	Black
Laser Adjustment per Click	0.5 MOA	0.5 MOA
Laser W&E Travel Range	±50 MOA	±50 MOA
Storage Temperature	-40°C~70°C	-40°C~65°C
Working Temperature	-20°C~50°C	-40°C~51°C
Submersion	IP67	IP67
Vibration	TBD	TBD
PHYSICAL DATA		
Dimension(in)	TBD	TBD

	DRS-TH-LEM	DRS-NV-LEM
Reflex Sight DATA		
Light Source	LED	LED
Wavelength	650nm	650nm
Reticle	2 MOA Dot & 65MOA Circle	2 MOA Dot & 65MOA Circle
Selectable Reticle	•	•
Solar Power	○	○
Shake Awake Technology	•	•
Memory	•	•
No Parallax	•	•
Unlimited Eye Relief	•	•
Magnification	1×	1×
Multi-Coatings	•	•
Brightness Setting	8 DLt & 4NV Compatible	8 DLt & 4NV Compatible
NIGHT VISION/THERMAL DATA		
Boot Time	5s	3s
Operating Environment (Illuminance)	—	0.01lx
MRTD	<50mK	—
Zoom	•1X,3X,5X	•1X,2X,4X,8X
Lens Focus	25mm	25mm
Aperture	F1.1	F1.2
Focus Range	5m~infinity	5m~infinity
Field of view	7.2°×5.3°	7.2°×5.3°
Spectral Range	8-14um	400nm~950nm
Sensor Resolution	256×192	1920×1080
OLED Resolution	1024×768	1024×768
Frame Rate	50FPS	30FPS/60FPS
Video Recording Storage	•	•
Image Mode	White Hot - Highlight - Edge Detection	Fusion
Battery	2×18350	2×18350
Battery Life	Observation Mode: 10 Hours / Full Function: 8 Hours	Observation Mode: 8 Hours / Full Function: 6 Hours
External Charging	5V/1A,Magnetic USB	5V/1A,Magnetic USB
MECHANICAL DATA		
Housing Material	7075 T6 Aluminum	7075 T6 Aluminum
Surface Finish	Anodized	Anodized
Housing Color	Black	Black
Adjustment per Click	0.5 MOA	0.5 MOA
W&E Travel Range	±50 MOA	±50 MOA

	HE509T-RD X2-LEM	HE509T-GR X2-LEM	EPS-CARRY-GR-6-LEM	EPS-CARRY-RD-6-LEM	EPS-CARRY-GR-2-LEM	EPS-CARRY-RD-2-LEM	EPS-CARRY-GR-MRS-LEM
FUNCTIONS							
Selectable Reticle	•	•	○	○	○	○	•
Solar Power	•	•	○	○	○	○	•
Shake Awake Technology	•	•	•	•	•	•	•
Memory	•	•	•	•	•	•	•
OPTICAL DATA							
Light Source	LED	LED	LED	LED	LED	LED	LED
Wavelength	650nm	540nm	540nm	650nm	540nm	650nm	540nm
Reticle	2 MOA Dot & 65MOA Circle	2 MOA Dot & 65MOA Circle	6 MOA Dot	6 MOA Dot	2 MOA Dot	2 MOA Dot	2 MOA Dot & 32MOA Circle
No Parallax	•	•	•	•	•	•	•
Unlimited Eye Relief	•	•	•	•	•	•	•
Magnification	1×	1×	1×	1×	1×	1×	1×
Multi-Coatings	•	•	•	•	•	•	•
ELECTRONIC DATA							
Battery	CR1632	CR1632	CR1620	CR1620	CR1620	CR1620	CR1620
Battery Life (Setting 6)	50,000 Hours (Dot)	50,000 Hours (Dot)	50,000 Hours	50,000 Hours	50,000 Hours	50,000 Hours	50,000 Hours
Brightness Setting	10 DLt & 2NV Compatible	10 DLt & 2NV Compatible	8 DLt & 4NV Compatible	8 DLt & 4NV Compatible	8 DLt & 4NV Compatible	8 DLt & 4NV Compatible	8 DLt & 4NV Compatible
MECHANICAL DATA							
Housing Material	Titanium	Titanium	7075 T6 Aluminum	7075 T6 Aluminum	7075 T6 Aluminum	7075 T6 Aluminum	7075 T6 Aluminum
Surface Finish	Titanium Finish	Titanium Finish	Anodized	Anodized	Anodized	Anodized	Anodized
Housing Color	Black	Black	Black	Black	Black	Black	Black
Adjustment per Click	1 MOA	1 MOA	1.5 MOA	1.5 MOA	1.5 MOA	1.5 MOA	1.5 MOA
W&E Travel Range	±30 MOA	±30 MOA	±30 MOA	±30 MOA	±30 MOA	±30 MOA	±30 MOA
Storage Temperature	-40°C~70°C	-40°C~70°C	-40°C~70°C	-40°C~70°C	-40°C~70°C	-40°C~70°C	-40°C~70°C
Working Temperature	-30°C~60°C	-30°C~60°C	-30°C~60°C	-30°C~60°C	-30°C~60°C	-30°C~60°C	-30°C~60°C
Submersion	IP67	IP67	IPX8	IPX8	IPX8	IPX8	IPX8
Vibration	5000G	5000G	5000G	5000G	5000G	5000G	5000G
PHYSICAL DATA							
Window Size(in)	0.66×0.9	0.66×0.9	0.77×0.58	0.77×0.58	0.77×0.58	0.77×0.58	0.77×0.58
Dimension(in)Body	1.6×1.16×1.13	1.6×1.16×1.13	1.62×1.07×0.95	1.62×1.07×0.95	1.62×1.07×0.95	1.62×1.07×0.95	1.62×1.07×0.95
Weight(oz)Body	1.72	1.72	1.23	1.23	1.23	1.23	1.23

	EPS-CARRY-RD-MRS-LEM	EPS-GR-6-LEM	EPS-RD-6-LEM	EPS-GR-2-LEM	EPS-RD-2-LEM	EPS-GR-MRS-LEM	EPS-RD-MRS-LEM
FUNCTIONS							
Selectable Reticle	●	○	○	○	○	●	●
Solar Power	●	○	○	○	○	●	●
Shake Awake Technology	●	●	●	●	●	●	●
Memory	●	●	●	●	●	●	●
OPTICAL DATA							
Light Source	LED	LED	LED	LED	LED	LED	LED
Wavelength	650nm	540nm	650nm	540nm	650nm	540nm	650nm
Reticle	2 MOA Dot & 32MOA Circle	6 MOA Dot	6 MOA Dot	2 MOA Dot	2 MOA Dot	2 MOA Dot & 32MOA Circle	2 MOA Dot & 32MOA Circle
No Parallax	●	●	●	●	●	●	●
Unlimited Eye Relief	●	●	●	●	●	●	●
Magnification	1×	1×	1×	1×	1×	1×	1×
Multi-Coatings	●	●	●	●	●	●	●
ELECTRONIC DATA							
Battery	CR1620	CR1620	CR1620	CR1620	CR1620	CR1620	CR1620
Battery Life (Setting 6)	50,000 Hours	50,000 Hours	50,000 Hours	50,000 Hours	50,000 Hours	50,000 Hours	50,000 Hours
Brightness Setting	8 DLt & 4NV Compatible	8 DLt & 4NV Compatible	8 DLt & 4NV Compatible	8 DLt & 4NV Compatible	8 DLt & 4NV Compatible	8 DLt & 4NV Compatible	8 DLt & 4NV Compatible
MECHANICAL DATA							
Housing Material	7075 T6 Aluminum	7075 T6 Aluminum	7075 T6 Aluminum	7075 T6 Aluminum	7075 T6 Aluminum	7075 T6 Aluminum	7075 T6 Aluminum
Surface Finish	Anodized	Anodized	Anodized	Anodized	Anodized	Anodized	Anodized
Housing Color	Black	Black	Black	Black	Black	Black	Black
Adjustment per Click	1.5 MOA	1.5 MOA	1.5 MOA	1.5 MOA	1.5 MOA	1.5 MOA	1.5 MOA
W&E Travel Range	±30 MOA	±30 MOA	±30 MOA	±30 MOA	±30 MOA	±30 MOA	±30 MOA
Storage Temperature	-40°C~70°C	-40°C~70°C	-40°C~70°C	-40°C~70°C	-40°C~70°C	-40°C~70°C	-40°C~70°C
Working Temperature	-30°C~60°C	-30°C~60°C	-30°C~60°C	-30°C~60°C	-30°C~60°C	-30°C~60°C	-30°C~60°C
Submersion	IPX8	IPX8	IPX8	IPX8	IPX8	IPX8	IPX8
Vibration	5000G	5000G	5000G	5000G	5000G	5000G	5000G
PHYSICAL DATA							
Window Size(in)	0.77×0.58	0.90×0.63	0.90×0.63	0.90×0.63	0.90×0.63	0.90×0.63	0.90×0.63
Dimension(in)Body	1.62×1.07×0.95	1.62×1.19×0.99	1.62×1.19×0.99	1.62×1.19×0.99	1.62×1.19×0.99	1.62×1.19×0.99	1.62×1.19×0.99
Weight(oz)Body	1.23	1.4	1.4	1.4	1.4	1.4	1.4

● INCLUDED ○ NOT INCLUDED

	HE507COMP-GR-LEM	HS507COMP-LEM	HS407C X2-LEM	HE407C-GR X2-LEM	HE407K-GR X2-LEM	HS407K X2-LEM
FUNCTIONS						
Selectable Reticle	•	•	○	○	○	○
Solar Power	○	○	•	•	○	○
Shake Awake Technology	•	•	•	•	•	•
Memory	•	•	•	•	•	•
OPTICAL DATA						
Light Source	LED	LED	LED	LED	LED	LED
Wavelength	540nm	650nm	540nm	540nm	540nm	650nm
Reticle	2 MOA Dot & 8/20/32 MOA Circle	2 MOA Dot & 8/20/32 MOA Circle	2 MOA Dot	2 MOA Dot	6 MOA Dot	6 MOA Dot
No Parallax	•	•	•	•	•	•
Unlimited Eye Relief	•	•	•	•	•	•
Magnification	1×	1×	1×	1×	1×	1×
Multi-Coatings	•	•	•	•	•	•
ELECTRONIC DATA						
Battery	CR1632	CR1632	CR1632	CR1632	CR1632	CR1632
Battery Life (Setting 6)	50,000 Hours	50,000 Hours	50,000 Hours	50,000 Hours	50,000 Hours	50,000 Hours
Brightness Setting	6 DLt & 2NV Compatible	6 DLt & 2NV Compatible	10 DLt & 2NV Compatible	10 DLt & 2NV Compatible	10 DLt & 2NV Compatible	10 DLt & 2NV Compatible
MECHANICAL DATA						
Housing Material	7075 T6 Aluminum	7075 T6 Aluminum	7075 T6 Aluminum	7075 T6 Aluminum	7075 T6 Aluminum	7075 T6 Aluminum
Surface Finish	Anodized	Anodized	Anodized	Anodized	Anodized	Anodized
Housing Color	Black	Black	Black	Black	Black	Black
Adjustment per Click	1 MOA	1 MOA	1 MOA	1 MOA	1 MOA	1 MOA
W&E Travel Range	±30 MOA	±30 MOA	±50 MOA	±50 MOA	±30 MOA	±30 MOA
Storage Temperature	-40°C~70°C	-40°C~70°C	-40°C~70°C	-40°C~70°C	-40°C~70°C	-40°C~70°C
Working Temperature	-30°C~60°C	-30°C~60°C	-30°C~60°C	-30°C~60°C	-30°C~60°C	-30°C~60°C
Submersion	IP67	IP67	IP67	IP67	IP67	IP67
Vibration	5000G	5000G	5000G	5000G	5000G	5000G
PHYSICAL DATA						
Window Size(in)	1.1×0.87	1.1×0.87	0.63×0.91	0.63×0.91	0.58×0.77	0.58×0.77
Dimension(in)Body	1.8×1.3×1.3	1.8×1.3×1.3	1.78×1.15×1.15	1.78×1.15×1.15	1.6×0.98×0.95	1.6×0.98×0.95
Weight(oz)Body	1.7	1.7	1.5	1.5	1	1

	HS507C X2-LEM	HE507C-GR X2-LEM	HS507K X2-LEM	HE507K-GR X2-LEM	HE508T-GR X2-LEM	HE508T-RD X2-LEM
FUNCTIONS						
Selectable Reticle	•	•	•	•	•	•
Solar Power	•	•	○	○	•	•
Shake Awake Technology	•	•	•	•	•	•
Memory	•	•	•	•		•
OPTICAL DATA						
Light Source	LED	LED	LED	LED	LED	LED
Wavelength	540nm	540nm	650nm	540nm	540nm	650nm
Reticle	2 MOA Dot & 32MOA Circle	2 MOA Dot & 32MOA Circle	2 MOA Dot & 32MOA Circle	2 MOA Dot & 32MOA Circle	2 MOA Dot & 32MOA Circle	2 MOA Dot & 32MOA Circle
No Parallax	•	•	•	•	•	•
Unlimited Eye Relief	•	•	•	•	•	•
Magnification	1×	1×	1×	1×	1×	1×
Multi-Coatings	•	•	•	•	•	•
ELECTRONIC DATA						
Battery	CR1632	CR1632	CR1632	CR1632	CR1632	CR1632
Battery Life (Setting 6)	50,000 Hours (Dot)	50,000 Hours (Dot)	50,000 Hours (Dot)	50,000 Hours (Dot)	50,000 Hours (Dot)	50,000 Hours (Dot)
Brightness Setting	10 DLt & 2NV Compatible	10 DLt & 2NV Compatible	10 DLt & 2NV Compatible	10 DLt & 2NV Compatible	10 DLt & 2NV Compatible	10 DLt & 2NV Compatible
MECHANICAL DATA						
Housing Material	7075 T6 Aluminum	7075 T6 Aluminum	7075 T6 Aluminum	7075 T6 Aluminum	Titanium	Titanium
Surface Finish	Anodized	Anodized	Anodized	Anodized	Titanium Finish	Titanium Finish
Housing Color	Black	Black	Black	Black	Black	Black
Adjustment per Click	1 MOA	1 MOA	1 MOA	1 MOA	1 MOA	1 MOA
W&E Travel Range	±50 MOA	±50 MOA	±30 MOA	±30 MOA	±50 MOA	±50 MOA
Storage Temperature	-40°C~70°C	-40°C~70°C	-40°C~70°C	-40°C~70°C	-40°C~70°C	-40°C~70°C
Working Temperature	-30°C~60°C	-30°C~60°C	-30°C~60°C	-30°C~60°C	-30°C~60°C	-30°C~60°C
Submersion	IP67	IP67	IP67	IP67	IP67	IP67
Vibration	5000G	5000G	5000G	5000G	5000G	5000G
PHYSICAL DATA						
Window Size(in)	0.63×0.91	0.63×0.91	0.58×0.77	0.58×0.77	0.63×0.91	0.63×0.91
Dimension(in)Body	1.78×1.15×1.15	1.78×1.15×1.15	1.6×0.98×0.95	1.6×0.98×0.95	1.78×1.15×1.15	1.78×1.15×1.15
Weight(oz)Body	1.5	1.5	1	1	2	2

• INCLUDED ○ NOT INCLUDED

	SCS-CARRY-GR-LEM	SCS-CZP10-GR-LEM	SCRS-GR-2-LEM	SCRS-RD-2-LEM	SCRS-GR-MRS-LEM	SCRS-RD-MRS-LEM
FUNCTIONS						
Selectable Reticle	•	•	○	○	•	•
Solar Power	•	•	•	•	•	•
Shake Awake Technology	○	○	•	•	•	•
Memory	○	○	•	•	•	•
OPTICAL DATA						
Light Source	LED	LED	LED	LED	LED	LED
Wavelength	540nm	540nm	540nm	650nm	540nm	650nm
Reticle	2 MOA Dot & 32MOA Circle	2 MOA Dot & 32MOA Circle	2 MOA Dot	2 MOA Dot	2 MOA Dot & 65MOA Circle	2 MOA Dot & 65MOA Circle
No Parallax	•	•	•	•	•	•
Unlimited Eye Relief	•	•	•	•	•	•
Magnification	1×	1×	1×	1×	1×	1×
Multi-Coatings	•	•	•	•	•	•
ELECTRONIC DATA						
Battery	Internal Rechargeable Battery	Internal Rechargeable Battery	Internal Rechargeable Battery	Internal Rechargeable Battery	Internal Rechargeable Battery	Internal Rechargeable Battery
Battery Life (Setting 6)	20,000 Hours	20,000 Hours	20,000 Hours	20,000 Hours	20,000 Hours	20,000 Hours
Brightness Setting	Auto	Auto	8 DLt & 4NV Compatible	8 DLt & 4NV Compatible	8 DLt & 4NV Compatible	8 DLt & 4NV Compatible
MECHANICAL DATA						
Housing Material	7075 T6 Aluminum	7075 T6 Aluminum	7075 T6 Aluminium	7075 T6 Aluminium	7075 T6 Aluminium	7075 T6 Aluminium
Surface Finish	Anodized	Anodized	Anodized	Anodized	Anodized	Anodized
Housing Color	Black	Black	Black	Black	Black	Black
Adjustment per Click	1.5 MOA	1 MOA	1 MOA	1 MOA	1 MOA	1 MOA
W&E Travel Range	±30 MOA	±30 MOA	±50 MOA	±50 MOA	±50 MOA	±50 MOA
Storage Temperature	-40°C~70°C	-40°C~70°C	-40°C~70°C	-40°C~70°C	-40°C~70°C	-40°C~70°C
Working Temperature	-30°C~60°C	-30°C~60°C	-30°C~60°C	-30°C~60°C	-30°C~60°C	-30°C~60°C
Submersion	IPX8	IP67	IP67	IP67	IP67	IP67
Vibration	5000G	5000G	1000G	1000G	1000G	1000G
PHYSICAL DATA						
Window Size(in)	0.90×0.63	0.77×0.58	22 mm	22 mm	22 mm	22 mm
Dimension(in) Body	1.6×1×0.95	2.06×1.05×0.93	1.7×1.35×1.6	1.7×1.35×1.6	1.7×1.35×1.6	1.7×1.35×1.6
Weight(oz)Body	1.06	1.25	2.45	2.45	2.45	2.45

	SCS MP2-GR-LEM	SCS VP9-GR-LEM	SCS PDP-GR-LEM	SCS 320-GR-LEM	SCS MOS-GR-LEM
FUNCTIONS					
Selectable Reticle	•	•	•	•	•
Solar Power	•	•	•	•	•
Shake Awake Technology	○	○	○	○	○
Memory	○	○	○	○	○
OPTICAL DATA					
Light Source	LED	LED	LED	LED	LED
Wavelength	540nm	540nm	540nm	540nm	540nm
Reticle	2 MOA Dot & 32MOA Circle	2 MOA Dot & 32MOA Circle	2 MOA Dot & 32MOA Circle	2 MOA Dot & 32MOA Circle	2 MOA Dot & 32MOA Circle
No Parallax	•	•	•	•	•
Unlimited Eye Relief	•	•	•	•	•
Magnification	1×	1×	1×	1×	1×
Multi-Coatings	•	•	•	•	•
ELECTRONIC DATA					
Battery	Internal Rechargeable Battery	Internal Rechargeable Battery	Internal Rechargeable Battery	Internal Rechargeable Battery	Internal Rechargeable Battery
Battery Life (Setting 6)	20,000 Hours	20,000 Hours	20,000 Hours	20,000 Hours	20,000 Hours
Brightness Setting	Auto	Auto	Auto	Auto	Auto
MECHANICAL DATA					
Housing Material	7075 T6 Aluminium	7075 T6 Aluminum	7075 T6 Aluminum	7075 T6 Aluminum	Titanium
Surface Finish	Anodized	Anodized	Anodized	Anodized	Titanium Finish
Housing Color	Black	Black	Black	Black	Black
Adjustment per Click	1 MOA	1 MOA	1 MOA	1.5 MOA	1 MOA
W&E Travel Range	±30 MOA	±30 MOA	±30 MOA	±30 MOA	±30 MOA
Storage Temperature	-40°C~70°C	-40°C~70°C	-40°C~70°C	-40°C~70°C	-40°C~70°C
Working Temperature	-30°C~60°C	-30°C~60°C	-30°C~60°C	-30°C~60°C	-30°C~60°C
Submersion	IP67	IP67	IP67	IPX8	IP67
Vibration	5000G	5000G	5000G	5000G	5000G
PHYSICAL DATA					
Window Size(in)	0.77×0.58	0.77×0.58	0.77×0.58	0.90×0.63	0.77×0.58
Dimension(in) Body	2×1.05×0.95	2×1.05×0.95	2×1.05×0.95	1.85×1.15×1.06	1.93×1.03×0.91
Weight(oz)Body	1.35	1.35	1.35	1.35	1.3

	HS510C-LEM	HE510C-GR-LEM	AEMS-LEM
FUNCTIONS			
Selectable Reticle	•	•	•
Solar Power	•	•	•
Shake Awake Technology	•	•	•
Memory	•	•	•
OPTICAL DATA			
Light Source	LED	LED	LED
Wavelength	650nm	540nm	650nm
Reticle	2 MOA Dot & 65MOA Circle	2 MOA Dot & 65MOA Circle	2 MOA Dot & 65MOA Circle
No Parallax	•	•	•
Unlimited Eye Relief	•	•	•
Magnification	1×	1×	1×
Multi-Coatings	•	•	•
Laser	○	○	○
ELECTRONIC DATA			
Battery	CR2032	CR2032	CR2032
Battery Life (Setting 6)	50,000 Hours	50,000 Hours	50,000 Hours
Brightness Setting	10 DLt & 2NV Compatible	10 DLt & 2NV Compatible	8 DLt & 4NV Compatible
MECHANICAL DATA			
Housing Material	Aluminum & Titanium Hood	Aluminum & Titanium Hood	7075 T6 Aluminum
Surface Finish	MAO	MAO	Anodized
Housing Color	Black	Black	Black
Adjustment Per Click	0.5 MOA	0.5 MOA	0.5 MOA
W&E Travel Range	±50 MOA	±50 MOA	±50 MOA
Storage Temperature	-40°C~70°C	-40°C~70°C	-40°C~70°C
Working Temperature	-30°C~60°C	-30°C~60°C	-30°C~60°C
Submersion	IP67	IP67	IPX8
Vibration	1000G	1000G	1000G
PHYSICAL DATA			
Window Size (in)	0.91×1.26	0.91×1.26	1.1×0.87
Dimension (in) Body	3.3×1.68×1.78	3.3×1.68×1.78	2.2×1.54×1.7
Weight (oz) Body	4.94	4.94	4.3
Central Height (in) Mount	1.41	1.41	1.63
Weight (oz) Mount	7.6	7.6	5.6

	AEMS CORE-LEM	AEMS CORE-GR-LEM
FUNCTIONS		
Selectable Reticle	○	○
Solar Power	○	○
Shake Awake Technology	●	●
Memory	●	●
OPTICAL DATA		
Light Source	LED	LED
Wavelength	650nm	540nm
Reticle	2 MOA Dot	2 MOA Dot
No Parallax	●	●
Unlimited Eye Relief	●	●
Magnification	1×	1×
Multi-Coatings	●	●
Laser	○	○
ELECTRONIC DATA		
Battery	CR2032	CR2032
Battery Life (Setting 6)	50,000 Hours	50,000 Hours
Brightness Setting	10 DLt & 2NV Compatible	10 DLt & 2NV Compatible
MECHANICAL DATA		
Housing Material	Aluminum	Aluminum
Surface Finish	MAO	MAO
Housing Color	Black	Black
Adjustment Per Click	0.5 MOA	0.5 MOA
W&E Travel Range	±50 MOA	±50 MOA
Storage Temperature	-40°C~70°C	-40°C~70°C
Working Temperature	-30°C~60°C	-30°C~60°C
Submersion	IP67	IP67
Vibration	1000G	1000G
PHYSICAL DATA		
Window Size (in)	1.1×0.87	1.1×0.87
Dimension (in) Body	2.2×1.54×1.7	2.2×1.54×1.7
Weight (oz) Body	4	4
Central Height (in) Mount	1.63	1.63
Weight (oz) Mount	5.3	5.3

	HS515CM-LEM	HE515CM-GR-LEM	HS515GM-LEM	HE515GM-GR-LEM
FUNCTIONS				
Selectable Reticle	•	•	•	•
Solar Power	•	•	○	○
Shake Awake Technology	•	•	•	•
Memory	•	•	•	•
OPTICAL DATA				
Light Source	LED	LED	LED	LED
Wavelength	650nm	540nm	650nm	540nm
Reticle	2 MOA Dot & 65MOA Circle	2 MOA Dot & 65MOA Circle	2 MOA Dot & 65MOA Circle	2 MOA Dot & 65MOA Circle
No Parallax	•	•	•	•
Unlimited Eye Relief	•	•	•	•
Magnification	1×	1×	1×	1×
Multi-Coatings	•	•	•	•
Laser	○	○	○	○
ELECTRONIC DATA				
Battery	CR2032	CR2032	CR2032	CR2032
Battery Life (Setting 6)	50,000 Hours	50,000 Hours	50,000 Hours	50,000 Hours
Brightness Setting	10 DLt & 2NV Compatible	10 DL & 2NV Compatible	10 DLt & 2NV Compatible	10 DL & 2NV Compatible
MECHANICAL DATA				
Housing Material	7075 T6 Aluminum	7075 T6 Aluminum	7075 T6 Aluminum	7075 T6 Aluminum
Surface Finish	Hard Anodized	Anodize	Hard Anodized	Anodize
Housing Color	Black	Black	Black	Black
Adjustment Per Click	0.5 MOA	0.5 MOA	0.5 MOA	0.5 MOA
W&E Travel Range	±50 MOA	±50 MOA	±50 MOA	±50 MOA
Storage Temperature	-40°C~70°C	-40°C~70°C	-40°C~70°C	-40°C~70°C
Working Temperature	-40°C~60°C	-40°C~60°C	-40°C~60°C	-40°C~60°C
Submersion	IPX8	20 meter 30 min	IPX8	20 meter 30 min
Vibration	1000G	1000G	1000G	1000G
PHYSICAL DATA				
Window Size (in)	20mm Diameter	20mm Diameter	20mm Diameter	20mm Diameter
Dimension (in) Body	2.75×1.43×1.62	2.75×1.43×1.62	2.73×1.53×1.61	2.73×1.53×1.61
Weight (oz) Body	3.53	3.53	3.74	3.74
Central Height (in) Mount	1.63	1.63	1.63	1.63
Weight (oz) Mount	6.3	178		

	HE515CT-LEM	HE515GT-LEM	HE530C-LEM	HE530G-LEM
FUNCTIONS				
Selectable Reticle	•	•	•	•
Solar Power	•	○	•	○
Shake Awake Technology	•	•	•	•
Memory	•	•	•	•
OPTICAL DATA				
Light Source	LED	LED	LED	LED
Wavelength	540nm/650nm	540nm/650nm	540nm/650nm	540nm/650nm
Reticle	2 MOA Dot & 65MOA Circle	2 MOA Dot & 65MOA Circle	2 MOA Dot & 65MOA Circle	2 MOA Dot & 65MOA Circle
No Parallax	•	•	•	•
Unlimited Eye Relief	•	•	•	•
Magnification	1×	1×	1×	1×
Multi-Coatings	•	•	•	•
Laser	○	○	○	○
ELECTRONIC DATA				
Battery	CR2032	CR2032	CR2032	CR2032
Battery Life (Setting 6)	50,000 Hours	50,000 Hours	50,000 Hours	50,000 Hours
Brightness Setting	10 DL & 2NV Compatible	10 DL & 2NV Compatible	10 DL & 2NV Compatible	10 DL & 2NV Compatible
MECHANICAL DATA				
Housing Material	Titanium	Titanium	Titanium	Titanium
Surface Finish	Titanium Finish	Titanium Finish	Titanium Finish	Titanium Finish
Housing Color	Black	Black	Black	Black
Adjustment Per Click	0.5 MOA	0.5 MOA	0.5 MOA	0.5 MOA
W&E Travel Range	±50 MOA	±50 MOA	±50 MOA	±50 MOA
Storage Temperature	-40°C~70°C	-40°C~70°C	-40°C~70°C	-40°C~70°C
Working Temperature	-40°C~60°C	-40°C~60°C	-40°C~60°C	-40°C~60°C
Submersion	20 meter 30 min	20 meter 30 min	20 meter 30 min	20 meter 30 min
Vibration	1000G	1000G	1000G	1000G
PHYSICAL DATA				
Window Size (in)	20mm Diameter	20mm Diameter	30mm Diameter	30mm Diameter
Dimension (in) Body	2.67×1.45×1.6	2.67×1.51×1.6	3.22×1.65×1.87	3.22×1.9×1.77
Weight (oz) Body	4.06	4.33	6.77	6.56
Central Height (in) Mount	1.41	1.41	1.63	1.41
Weight (oz) Mount			290	267

	RAID-LEM	P.ID-K-LEM	P.ID-K-PLUS-LEM
FUNCTIONS			
Green Laser Pointer	○	○	●
Red Laser Pointer	○	○	○
IR Laser Pointer	○	○	○
IR Laser Illuminator	○	○	○
Flashlight	●	●	●
IR LED Illuminator	○	○	○
OPTICAL DATA			
Green or Red Laser Output Power(mW)	—	—	<5
Green or Red Laser Class	—	—	Class 3R
IR Pointer or Illuminator Output Power(mW)	—	—	—
IR Pointer or Illuminator Class	—	—	—
Green Laser Wavelength(nm)	—	—	520
Red Laser Wavelength(nm)	—	—	—
IR Laser Wavelength(nm)	—	—	—
Flashlight Output Power(lum)	1000	500/1000	1000
Candela	80000	11000/23000	10000
IR LED Illuminator Power (lum)	—	—	—
ELECTRONIC DATA			
Battery	18650	Built In	Built In
Battery Life	TBD	TBD	TBD
MECHANICAL DATA			
Housing Material	7075 T6 Aluminum	7075 T6 Aluminum	7075 T6 Aluminum
Surface Finish	Anodized	Anodized	Anodized
Housing Color	Black	Black	Black
Laser Adjustment per Click	—	—	4 MOA
Laser W&E Travel Range	—	—	±60 MOA
Storage Temperature	-40°C~70°C	-40°C~70°C	-40°C~70°C
Working Temperature	-10°C~51°C	-20°C~51°C	-20°C~51°C
Submersion	IPX8	IPX8	IPX8
Vibration	2000G	2000G	2000G
PHYSICAL DATA			
Dimension(in)	3.2×1.97×1.34	2.6×1.2×1.4	2.6×1.2×1.4
Weight(oz)	6.35	3.4	3.6

	P.ID-LEM	P.ID HC-LEM	P.ID-PLUS-LEM	P.ID-DUAL-LEM
FUNCTIONS				
Green Laser Pointer	○	○	●	●
Red Laser Pointer	○	○	○	○
IR Laser Pointer	○	○	○	●
IR Laser Illuminator	○	○	○	○
Flashlight	●	●	●	●
IR LED Illuminator	○	○	○	○
OPTICAL DATA				
Green or Red Laser Output Power(mW)	—	—	<5	<5
Green or Red Laser Class	—	—	Class 3R	Class 3R
IR Pointer or Illuminator Output Power(mW)	—	—	—	<0.7
IR Pointer or Illuminator Class	—	—	—	2M
Green Laser Wavelength(nm)	—	—	520	520
Red Laser Wavelength(nm)	—	—	—	—
IR Laser Wavelength(nm)	—	—	—	830
Flashlight Output Power(lum)	500/1000	400/800	450/900	400/800
Candela	11000/23000	21000/42000	10000/20000	8500/17000
IR LED Illuminator Power (lum)	—	—	—	—
ELECTRONIC DATA				
Battery	18350	18350	18350	18350
Battery Life	60 minutes Low / 30 minutes High	60 minutes Low / 30 minutes High	60 minutes Low / 30 minutes High	60 minutes Low / 30 minutes High
MECHANICAL DATA				
Housing Material	7075 T6 Aluminum	7075 T6 Aluminum	7075 T6 Aluminum	7075 T6 Aluminum
Surface Finish	Anodized	Anodized	Anodized	Anodized
Housing Color	Black	Black	Black	Black
Laser Adjustment per Click	—	—	4 MOA	4 MOA
Laser W&E Travel Range	—	—	±60 MOA	±60 MOA
Storage Temperature	-40°C~70°C	-40°C~70°C	-40°C~70°C	-40°C~70°C
Working Temperature	-20°C~51°C	-20°C~51°C	-20°C~51°C	-20°C~51°C
Submersion	IPX8	IPX8	IPX8	IPX8
Vibration	1500G	1500G	1500G	1500G
PHYSICAL DATA				
Dimension(in)	3.2×1.2×1.4	3.2×1.2×1.4	3.6×1.2×1.4	3.6×1.2×1.4
Weight(oz)	5	5	5.1	5.1

	IRIS-LEM	LS420-LEM	LS321-LEM	LS221-LEM	LS117-LEM
FUNCTIONS					
Green Laser Pointer	•	•	•	•	•
Red Laser Pointer	○	○	○	○	•
IR Laser Pointer	•	•	•	•	•
IR Laser Illuminator	•	•	•	○	○
Flashlight	○	•	○	○	○
OPTICAL DATA					
Green or Red Laser Output Power(mW)	5	5	5	5	5
Green or Red Laser Class	3R	IIIa	IIIa	IIIa	IIIa
IR Pointer or Illuminator Output Power(mW)	0.7	0.7	0.7	0.7	0.7
IR Pointer or Illuminator Class	2M	2M	2M	2M	2M
Green Laser Wavelength(nm)	520	520	520	520	520
Red Laser Wavelength(nm)	635	635	635	635	635
IR Laser Wavelength(nm)	820-860	830	830	830	830
Flashlight Output Power(lum)	—	600	—	—	—
ELECTRONIC DATA					
Battery	CR123A	CR123A	CR123A	CR123A	AA/CR2(Green)
MECHANICAL DATA					
Housing Material	7075 T6 Aluminum	7075 T6 Aluminum	7075 T6 Aluminum	7075 T6 Aluminum	7075 T6 Aluminum
Surface Finish	Anodized	MAO	MAO	MAO	MAO
Housing Color	Black	Black	Black	Black	Black
Laser Adjustment per Click	0.5 MOA	0.5 MOA	0.5 MOA	0.5 MOA	0.5 MOA
Laser W&E Travel Range	±50 MOA	±50 MOA	±50 MOA	±50 MOA	±50 MOA
Storage Temperature	-40°C~70°C	-40°C~65°C	-40°C~65°C	-40°C~65°C	-40°C~65°C
Working Temperature	-40°C~51°C	-40°C~51°C	-40°C~51°C	-40°C~51°C	-40°C~51°C
Submersion	IPX8	1 meter 30 min	1 meter 30 min	1 meter 30 min	1 meter 30 min
Vibration	2000G	1000G	1000G	1000G	1000G
PHYSICAL DATA					
Dimension(in)	3.2×1.97×1.34	3.6×2.9×1.6	3.6×2.2×1.6	3.4×1.9×1.5	3×1.5×1.3
Weight	6.35				

	LE420-LEM	LE321-GR/RD-LEM	LE221-LEM	LE117-LEM	LE112-LEM	LE111-LEM
FUNCTIONS						
Green Laser Pointer	▲	▲	▲	▲	○	▲
Red Laser Pointer					●	
IR Laser Pointer	●	●	●		●	
IR Laser Illuminator	●	●	○	○	○	○
Flashlight	●	●	○	○	○	○
IR LED Illuminator	○	○	○	○	○	○
OPTICAL DATA						
Green or Red Laser Output Power(mW)	5	5	5	5	5	5
Green or Red Laser Class	IIIa	IIIa	IIIa	IIIa	IIIa	IIIa
IR Pointer or Illuminator Output Power(mW)	0.7	0.7	0.7	0.7	0.7	0.7
IR Pointer or Illuminator Class	2M	2M	2M	2M	2M	2M
Green Laser Wavelength(nm)	520	520	520	520	○	520
Red Laser Wavelength(nm)	635	635	635	635	635	635
IR Laser Wavelength(nm)	830	830	830	830	830	830
Flashlight Output Power(lum)	600				○	
IR LED Illuminator Power (lum)					○	
ELECTRONIC DATA						
Battery	CR123A/18650	CR123A	CR123A	CR123A	CR1/3N	CR1/3N
MECHANICAL DATA						
Housing Material	Titanium	Titanium	Titanium	Titanium	Titanium	Titanium
Surface Finish	Titanium Finish	Titanium Finish	Titanium Finish	Titanium Finish	Titanium Finish	Titanium Finish
Housing Color	Black	Black	Black	Black	Black	Black
Laser Adjustment per Click	0.5 MOA	0.5 MOA	0.5 MOA	0.5 MOA		Linear adjustment
Laser W&E Travel Range	±60 MOA	±60 MOA	±60 MOA	±60 MOA	±60 MOA	±60 MOA
Storage Temperature	-40°C~65°C	-40°C~65°C	-40°C~65°C	-40°C~65°C	-40°C~65°C	-40°C~65°C
Working Temperature	-40°C~51°C	-40°C~51°C	-40°C~51°C	-40°C~51°C	-40°C~51°C	-40°C~51°C
Submersion	5 meter 30 min	5 meter 30 min	5 meter 30 min	5 meter 30 min	IP67	30 meters 30 min
Vibration	1000G	1000G	1000G	1000G	1000G	3000G
PHYSICAL DATA						
Dimension(in)	3.66×3.07×1.46	3.7×2.24×1.46	3.43×1.77×1.34	3.43×1.77×1.34	1.98×1.17×0.88	2.1×1.15×0.91

	HM6X-LEM	HM3XT-LEM	HM3X-LEM
OPTICAL DATA			
Magnification	6X	3X	3X
Exit Pupil	4.6mm	7.6mm	7.6mm
Eye Relief	65mm	70mm	70mm
Filed of View	3.7°	7°	7°
Diopter	±3D	±3D	±3D
Transmittance	0.75	0.75	75%
Lens Material	Optical Glass	Optical Glass	Glass
ENVIRONMENT DATA			
Storage Temperature (°C)	-40°C~70°C	-40°C~70°C	-40°C~70°C
Operating Temperature (°C)	-30°C~60°C	-30°C~60°C	-30°C~60°C
Humidity (%)	0.95	0.95	0.95
Waterproof	1 meter 30 min	1 meter 30 min	1 meter 30 min
Nitrogen (Concentration)	99%	99%	99%
Vibration Resistance (1000)	<2MOA	<2MOA	<2MOA
MECHANICAL DATA			
Housing Material	7075 T6 Aluminum	Titanium	Durable aluminium
Housing Finish	Anodized	Titanium/Black	MAO/Black
Dimension (mm)	4.33×1.8×2.5	3.2 x 1.8 x 2.5	4 x 1.7 x 2.5
Weight (oz)	11	11.6	9.8



HOLOSUN

